



PCB1500535ASSY
Board Replacement for RB24,
RB115 and RB24/200 Relay Boxes

Installation Manual

C1915M (6/97)

INSTALLATION INSTRUCTIONS



CAUTION: *Failure to disconnect power will expose you to a risk of electric shock.*



CAUTION: *It is important, when screwing down the PCB1500535ASSY (Rev. D) PC board to the relay box, that you use the provided nylon washers between the screw, PC board and top metal standoff.*



CAUTION: *Failure to use nylon washers when attaching the PC board to the top metal standoff will result in a short condition damaging the PC board.*

The PCB1500535ASSY (Rev. D) PC board is part of the RB24, RB115, RB24/220 Relay Boxes. For complete installation and operation instructions, refer to manual C915M-D.

1. Disconnect power to the relay box.
2. Refer to Figure 1. Disconnect the 115 VAC IN plug to the transformer and disconnect the PAN/TILT OUT, and 24 VAC CONTROL IN connections.
3. Unscrew the three (3) screws attaching the PC board to the relay box and remove the old PC board. Save the screws and lock washers to attach the new PC board.
4. Remove the new PC board from the static bag.
5. Refer to Figure 2. Install the top screw first (located near C6). Install the PC board by putting a lock washer and nylon washer on a screw and inserting it through the hole in the PC board. Then put a nylon washer under the PC board and tighten the screw into the standoff as needed. Do not over tighten. Insert the screws in the bottom holes in the PC board and tighten until firmly attached.
6. Reconnect the 24 VAC CONTROL IN and PAN/TILT OUT connections, and the 115 VAC IN plug to the transformer. Reconnect power to the relay box.

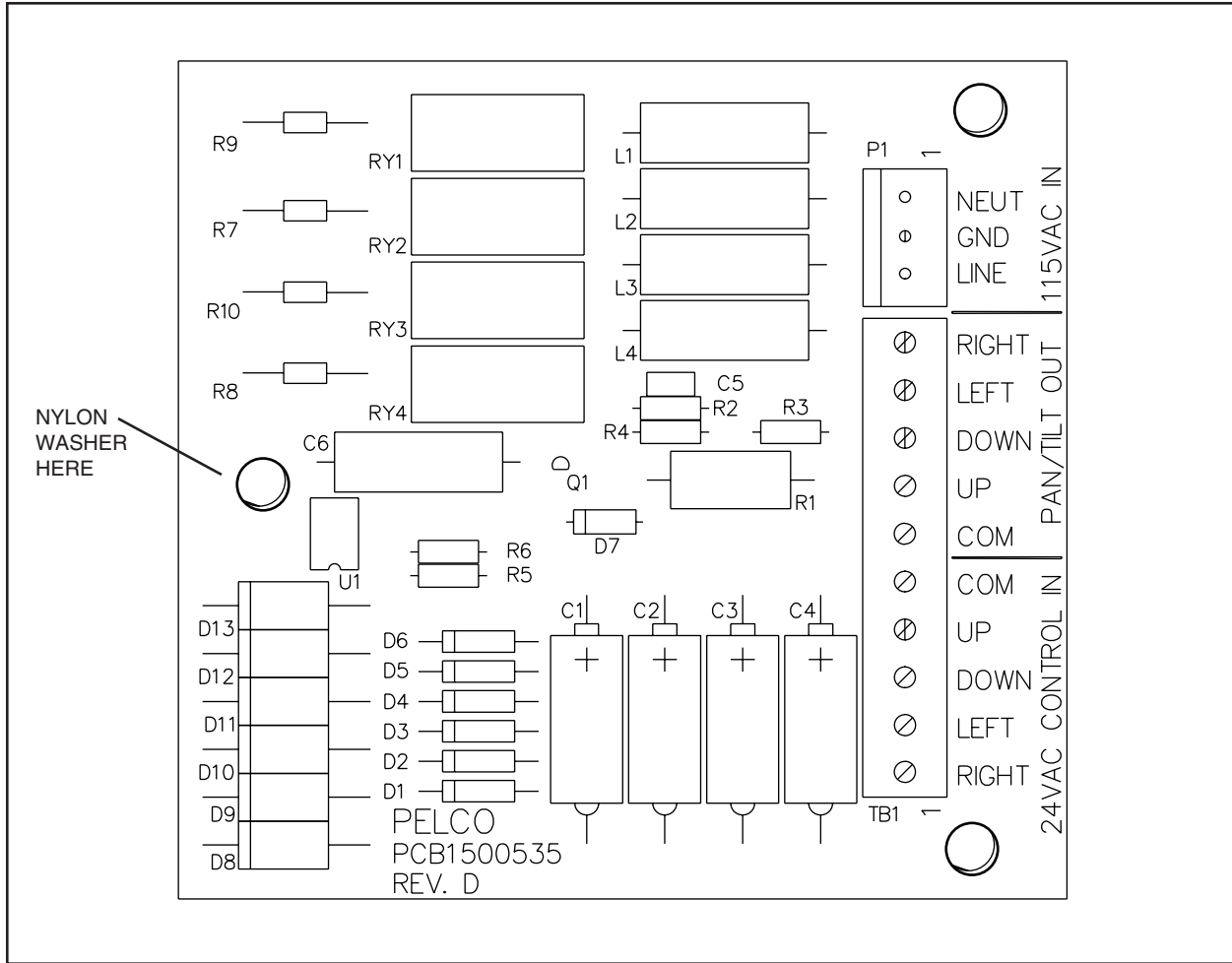


Figure 1. PC Board Component and Mounting Locations

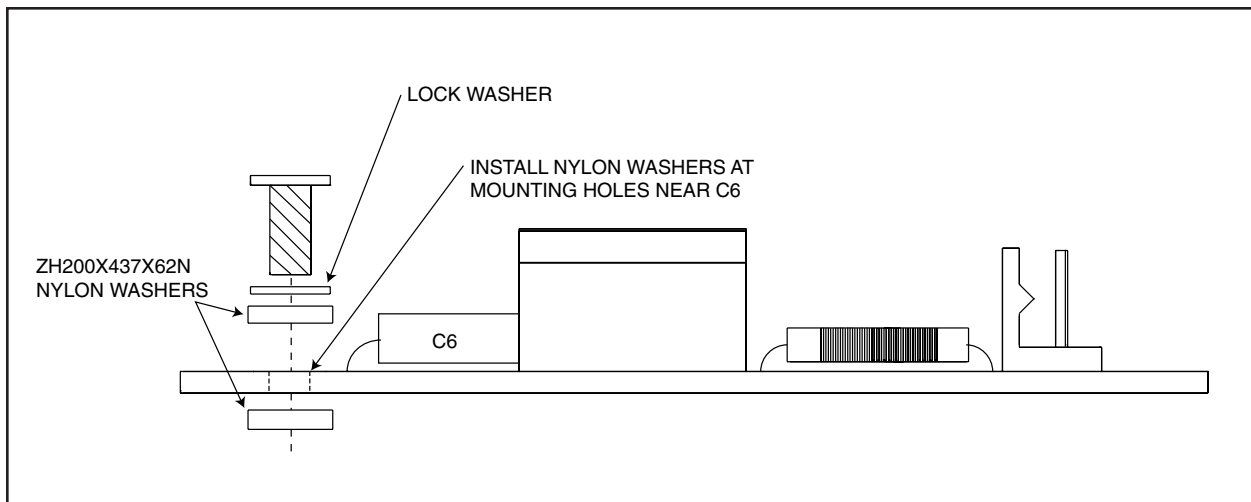


Figure 2. PC Board Side View Showing Screw and Washer Locations